



**Huidamed**®

CHANGZHOU HUIDA MEDICAL INSTRUMENT CO., LTD

Add: NO.1 Shijiapeng Road, Jincheng Town Industrial Park,  
Jint an, Jiangsu Province, China  
Tel: +86 519 82857858 Fax: +86 519 82857868  
Email: info@huidamed.com  
www.huidamed.com

*HUIDAMED, all rights reserved · version 2022.1.1BE Subject to Change*



CHANGZHOU HUIDA MEDICAL INSTRUMENT CO.,LTD



# COMPANY PROFILE

Established in 1999 and located in Changzhou, HUIDAMED, as a professional manufacturer of neurosurgery equipment, focus on the development of cranial stabilization system, brain retractor system and surgical power system. With the certificate of EN ISO 13485 and CE, high quality is company's foundation.

After 20 years progressing, HUIDAMED establishing its place in the neurosurgery market of China and abroad through the strict China and international standards. The sales network covers over 50 countries among the world, and well-known by the partners for its fine quality and service.

Aim to help surgeons to do their jobs with less risk and better results, and improve the quality of patients life, HUIDAMED continuously innovate on the products and services. Care for life, keep improving.

**1999**

Established as JINTAN HUIDA MEDICAL INSTRUMENTS FACTORY in 1999

**2010**

Developed and registered Electric Craniotome Drill System, Medical Endoscopy LED Source, Cranial Instruments and Medical Micro Drill System during 2001-2010.

**2001**

Rename as JINTAN HUIDA MEDICAL INSTRUMENT CO LTD in 2001, and got the first registration of Cranial Stabilization System in China.

**2011**

The Import & Export License has been approved in 2011, then start the world wide business.

**2014**

Rename as CHANGZHOU HUIDA MEDICAL INSTRUMENT CO LTD in 2014, and ISO:13485 also be approved this year.

**2022**

We keep improving.

常州市汇达医疗器械有限公司  
CHANGZHOU HUIDA MEDICAL INSTRUMENT CO. LTD



### PROFESSIONALITY

Focus on Neurosurgery for over 20 years, with rich experience and technical accumulation



### QUALITY

With ISO13485 and CE certificate, guarantees good product quality



### INNOVATION

Guided by clinical needs, continuous development and innovation



### SERVICE

Fast, active and responsible pre-sale and after-sale service, worry-free in whole service life

# A

## CRANIAL STABILIZATION SYSTEM






# HDJ-IV A800 Cranial Stabilization System

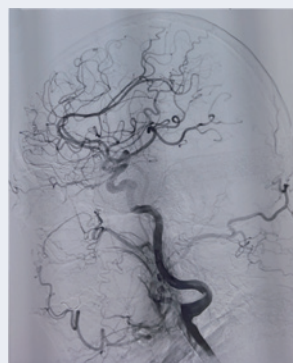
The new HDJ-IV A800 Radiolucent Cranial Stabilization System is the key step of HUIDAMED in the imaging product field, which focus on Neurosurgery Equipment for over 20 years. It is designed for DSA, CT, MRI and Fluoroscopy,aim to meet the clinical demands on neuro, spinal and interventional therapy.

The system have a “metal-free” option, plus the synthetic Sapphire-Carbon composite skull pin, could meet the requirement in MRI room and provide a good control on minimal imaging artifact.

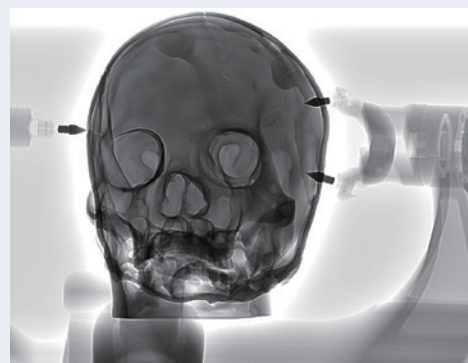


- 1 Stable, high-precision 3-point fixation of the head during surgery.
- 2 Torque screw make the skull pin pressure visualization.
- 3 Suit for both for children and adults.
- 4 Easy fixation and best view.
- 5 Fixation of patient in prone, supine, lateral
- 6 Could compatible with most DSA carbon table after replace with DSA table adapt base unit. Accept customization to adapt special table.
- 7 Horizontal bar provides a wide imaging window - full, side-to-side lateral positioning(24 inches/61cm)
- 8 Unique pitching adjusting joint provide more flexibility on position setting.

Component	
Description	Code
Head Clamp	HA82016
Swivel Adaptor	HA83016
Extension Member	HA84116
Transitional Member	HA84026
Universal Base Unit	HA84106
Composite Skull Pin (Adult)	HA01016



DSA image with HUIDAMED Radiolucent Skull Clamp in use



HUIDAMED Skull Clamp under Fluoroscopy version

# HDJ-IV A800 Cranial Stabilization System



70mm-240mm

## Head Clamp

Code: HA82016

- Pressure visualized.
- Easy lock dual pin holder.
- Whole material is metal free.



## Swivel Adaptor

Code: HA83016

- Adjustable on both horizontal and vertical planes.
- Whole material is metal free.



## Transitional Member

Code: HA84026

- Length 20cm.
- Make more distance between base unit and swivel adaptor.
- Use with extension member HA84116.
- Whole material is metal free.



## Extension Member

Code: HA84116

- Length 15cm.
- Used when need more length of base and more Angle adjustment range.
- Use with 20cm transitional member HA84026.
- Whole material is metal free.

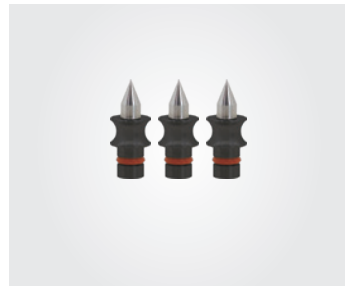
## Base Unit

Code: HA84106

- Universal table clamp,could match with both US&Europe model side rail.
- Adjustable on width, pitch angle.
- Table clamp part is aluminum and stainless steel, others metal free.



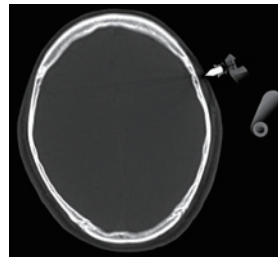
## HDJ-IV A800 Cranial Stabilization System



### Radiolucent Skull Pins

Code: HA01016(Adult)/HA01026 (Pediatric)

- Titanium pin tip plus composite material base, good imaging performance.



Under CT version



### Transitional Member

Code: HA84016

- Length 15cm.
- Used when no request on the extension distance.



### Headrest & Traction

Code: HA85016(Headrest)  
HA85036(Traction)

- Whole part is metal free.
- Gel pad provide good hemodynamic performance.

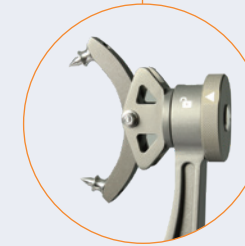


Radiolucent Headrest  
Traction System

## HDJ-II A600 Cranial Stabilization System

All Parts are Cutting from High performance Aluminum Alloy with CNC machine, high strength, better than the casting skull clamp. Surface harden treatment, more durable, anticorrosion and less light reflection.

Torque Screw (80lbs/360N)  
Visual setup for the pin pressure,  
ensure the safety of surgery.



Quarter Lock Handle  
One quarter to lock,  
simple and efficient operation.



Crocodile Teeth  
Unique Crocodile Teeth design,  
provide firmly connect with C-clamp.  
Make a strong support to the accessories.  
It also could protect the clamp arms,  
extend it's service life.

### Component

Description	Code
Head Clamp	HA62011G
Swivel Adaptor	HA03011G
Base Unit	HA64011G
Gel pad Headrest	HA65011G
Adult Skull Pin	HA01013P
Child Skull Pin	HA01023P

## HDJ-II A600 Cranial Stabilization System



### Head clamp

Code: HA62011G

- Material: High Performance Aluminum
- Quarter lock rock arm, one quarter to lock, simple and efficient operation.
- Visual setup for the pin pressure, ensure the safety of surgery.
- Crocodile Teeth design, providing stable and firm attachment support.
- Clamping distance from 12cm to 24cm, compatible with adults and children.
- 13 cm depth, meeting the needs of most skull size.
- Compatible with DORO & Mayfield.



### Swivel Adaptor

Code: HA03011G

- Material: High Performance Aluminum
- Horizontal adjustment range: 360 degree, Vertical adjustment range: 270 degree
- Stable, durable, and easy setting the position.
- Compatible with DORO & Mayfield.



### Base Unit

Code: HA64011G

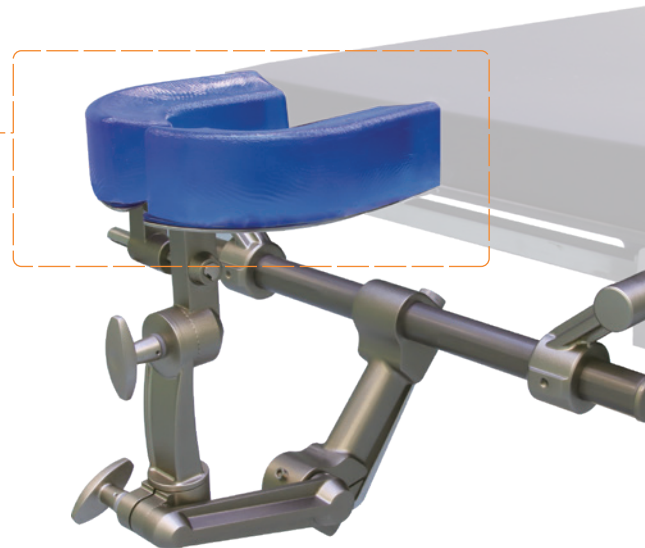
- Material: High Performance Aluminum
- Width adjustment range of 100mm-560mm, suitable for most of OT table.
- Standard size of the connect rod is  $\phi 14$ mm, also have 12mm, 16mm, 18mm and other options to match the OT table.
- Bearing capacity over 35kg.
- Compatible with DORO & Mayfield.



### Gel Pad Headrest

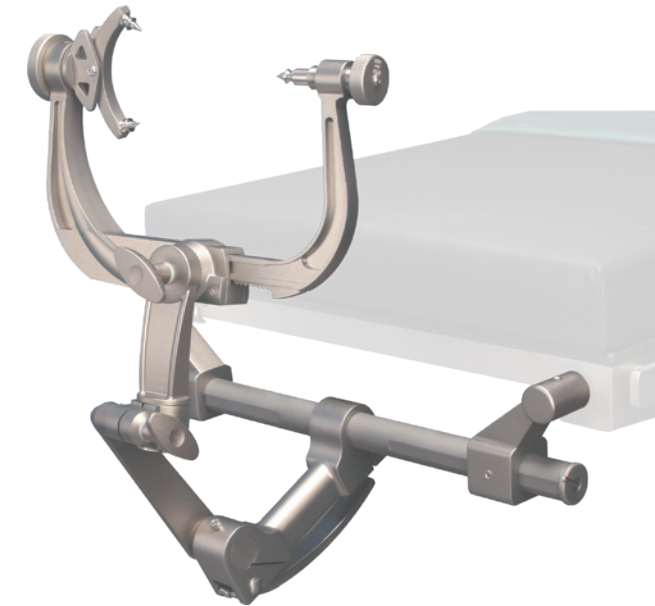
Code: HA65011G

- Providing support in the prone or supine position for adults and children.
- Adjustable pad base could fit various head sizes.
- Providing good hemodynamic performance and preventing bedsores during operation.
- The pad could be soaked in warm water in advance to reducing the loss of body-temperature during long-term operation.
- Compatible with DORO & Mayfield.



## HDJ-II A500 Cranial Stabilization System

Three-pin positioning design, supported by high standard processing control, small assembly clearance and stable locking, effectively provide a firm skull support.  
Light-weight structure design, easy to handle and set.  
Surface harden treatment, more durable, anticorrosion and less light reflection.



### Head Clamp

Code: HA52011G

- Material: Aluminum
- Light-weight structure design.
- Quarter lock rock arm, one quarter to lock, simple and efficient operation.
- Visual setup for the pin pressure, ensure the safety of surgery.
- Clamping distance 12cm-24cm, compatible with adult and children head clamp.
- Depth 13cm, meeting the most needs of skull size.



### Swivel Adaptor

Code: HA03011G

- Material: Aluminum
- Horizontal adjustment range: 360 degree, Vertical adjustment range: 270 degree
- Stable, durable, and easy for proper adjustment after the patient fixed on the clamp.



### Base unit

Code: HA54011G

- Material: Aluminum
- Width adjustment range of 100mm-560mm, suitable for most of OT table.
- Standard size of the connect rod is  $\phi 14$ mm, also have 12mm, 16mm, 18mm and other options to match the OT table.
- Bearing capacity over 35kg, without shaking.



### Silica Headrest

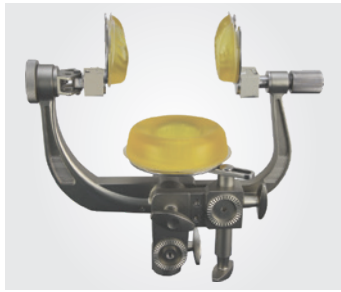
Code: HA55011G

- Providing support in the prone or supine position for adults and children.
- Adjustable pad base could fit various head sizes.

Component						
Description	Head Clamp	Swivel Adaptor	Base Unit	Silica Headrest	Adult Skull Pin	Child Skull Pin
Code	HA52011G	HA03011G	HA54011G	HA55011G	HA01013P	HA01023P



## CRANIAL STABILIZATION SYSTEM ACCESSORIES



### Noninvasive Skull Clamp

- Gel pad and skull clamp could be switched quickly
- Middle gel pad could be adjusted up and down
- Easy set up and use
- Normally use for 0~2 years newborn patients or patients whose skull could't bear the pressure of skull pins

Code: HA72011G



### Gel Pad Headresting with traction

- Support supine and prone positions in Neuro, ENT and eye surgery
- The distance between two pads could be adjusted, both fine for adults and children
- Gel pad could effectively prevent bed sore caused by prolonged surgery
- Traction arm provides better view for surgery

Code: HA65021G



### Ball Socket Adaptor

- Horizontal adjustment range: 360°
- Vertical adjustment range: 90°
- Compatible with Doro & Mayfield

Code: HA03021G



### Navigation Adaptor

Material: Stainless steel

Code: HR07021G



### Adult skull pin

- Material: Stainless steel
- Compatible with DORO & Mayfield.

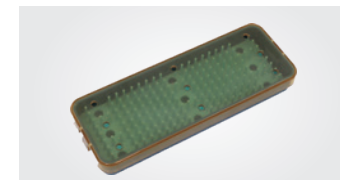
Code: HA01013P



### Pediatric skull pin

- Material: Stainless steel
- Compatible with DORO & Mayfield.

Code: HA01023P

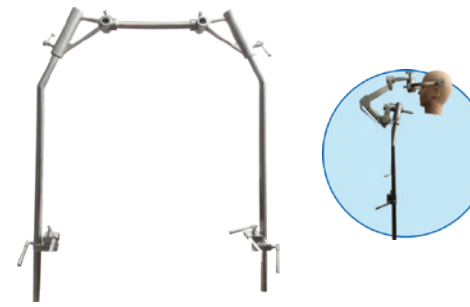


### Sterilizing Container

Produced by high polymer material, with silica pad, could protect the pins well

Code: HA01800P

## CRANIAL STABILIZATION SYSTEM ACCESSORIES



### Cross Bar

- Apply to sitting position
- Adapt to most operating tables

Code: HA07031G

### Table Adaptor

- Material: Stainless steel
- Adapt to most operating tables
- Support lateral position
- 4 holes model as option

Code: HA07013P



### Anatomy skull clamp

- Could be placed on the desktop
- Quick-lock base
- With ball socket adaptor, easy set and use

Code: A903

### Teflon® Coating Skull Clamp

- Autoclavable
- With US DuPont Teflon® coating
- Antisticking and easy-cleaning
- Other tech info same with A600 skull clamp

Code: A602



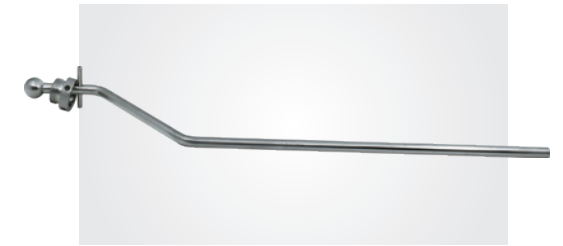
# BRAIN RETRACTOR SYSTEM

# B

## HDR-II R800 Brain Retractor System (HALO)



**HALO Ring** Material: Aluminum  
HR83011G



**Support Bar** HR82013Y



**C Clamp for HALO** HR81013Y



**HALO Leyla Retractor**  
250mm HR04253Y

### Main feature:

- The HALO ring could be adjusted at any angle, as well as folding in half. Maximizing the view and provide the hand support during surgery.
- Quick rail design, the retractor could be firmly locked on it at any position.
- Light weight design, easy handle and set up, high performance aluminum alloy guaranty both the strength and durability.
- C clamp could be firmly connected with A600 skull clamp, also adapt to the other brand skull clamps.

Component							
Description	HALO Ring	Support Bar	C Clamp for HALO	HALO Leyla Retractor	HALO Brain Blade	HALO Pattie Tray	Universal Key
Code	HR83011G	HR82013Y	HR81013Y	HR04253Y	A complete set	HR07013Y	HR00013Y



## HDR-I R700 BRAIN RETRACTOR SYSTEM (J-ARM)

### Product Feature :

- Two J-arms could be fixed on the skull clamp and adjusted at suitable height & angle.
- Quick rail design, the retractor could be firmly locking on it at any position, could provide the hand support during surgery.
- Light weight design, easy handle and set up, high performance aluminum alloy guaranty both the strength and durability.



#### HALO Brain Blade

- HR05013Y: 152\*6mm
- HR05023Y: 152\*10mm
- HR05033Y: 152\*16mm
- HR05043Y: 152\*19mm
- HR05053Y: 152\*25mm



#### C Clamp for J-Arm

HR71013Y



#### J-Arm

Material: Aluminum  
HR73011G

Component					
Description	C Clamp for J-Arm	J-Arm	HALO Leyla Retractor	HALO Brain Blade	HALO Pattie Tray
Code	HR71013Y	HR73011G	HR04253Y	A complete set	HR07013Y

## HDR-I R300 BRAIN RETRACTOR SYSTEM



### FIXATION MOUNT

- Fixed on the side rail of OT-table, the ball socket table adaptor could adjust at any angle, easy set and quick mounting leylya retractor.

Code: R300



#### Ball Socket Adaptor

360°Adjustment  
HR31013Y



#### Support Rod (straight)

340mm  
HR32013Y



#### Support Rod (angled)

420mm  
HR32023Y



#### Leyla adaptor

HR33013Y



#### Leyla Retractor

Quick Lock HR90103Y: 350mm  
HR90203Y: 400mm  
HR90303Y: 450mm



#### Brain Blade

HN40123Y: 200\*12mm  
HN40143Y: 200\*14mm  
HN40163Y: 200\*16mm  
HN40183Y: 200\*18mm  
HN40203Y: 200\*20mm

Component						
Description	Ball Socket Adaptor	Support Rod (straight)	Support Rod (angled)	Retractor Arm Connector	Leyla Retractor	Brain Blade
Code	HR31013Y	HR32013Y	HR32023Y	HR33013Y	HR90103Y	HN40123Y

## HDR-I R400 BRAIN RETRACTOR SYSTEM



### Martin's Arm Retractor

- Unique locking structure provides excellent load-bearing performance, without loosen at max 5KG load.
- Multifunctional purpose, could be used as instrument holder, retractor holder, endoscopes holder and brain retractor frame. Could meet the various demands in OT room safety and quickly.

Code: R400



**Table Adaptor**

50mm  
HR41013Y



**Support rod**

400mm(H)\*120mm  
HR42013Y



**Universal Arm**

Vertical adjustment range: 360°  
HR43013Y

### Instrument Holder:



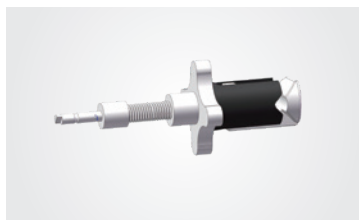
**Instrument Holder**

Material: Stainless steel  
Clamping range: 6-10mm  
Suitable for retractor and instrument  
HR44013Y



**Endoscope Holder (Side)**

Material: Aluminum alloy  
Range: 10-17mm  
Suitable for endoscope, working channels and instruments  
HR44023Y



**Endoscope Holder (Front)**

Material: Aluminum alloy + Polymer material  
Range: 3-7mm  
Suitable for endoscope & instruments  
HR44033Y

### Standard Component

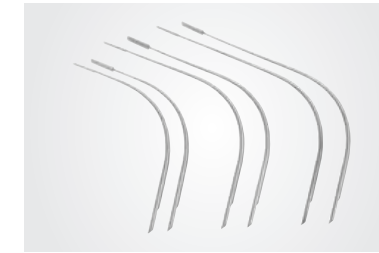
Description	Table Adaptor	Support Rod	Universal Arm	Instrument Holder
Code	HR41013Y	HR42013Y	HR43013Y	HR44013Y

## BRAIN RETRACTOR SYSTEM ACCESSORIES



**HALO Brain Blade - Coated**

HR05013D:152\*6mm  
HR05023D:152\*10mm  
HR05033D:152\*16mm  
HR05043D:152\*19mm  
HR05053D:152\*25mm



**Micro Brain Blade**

HR06013Y:114\*2mm  
HR06023Y:114\*4mm  
HR06033Y:140\*2mm  
HR06043Y:140\*4mm  
HR06053Y:165\*2mm  
HR06063Y:165\*4mm



**HALO Pattie tray**

HR07013Y



**Brain Blade - Coated**

HN40123D:200\*12mm  
HN40143D:200\*14mm  
HN40163D:200\*16mm  
HN40183D:200\*18mm  
HN40203D:200\*20mm



**Skull Adaptor**

HR90033Y  
Clamp on skull to adapt Leyla arm.



**Standard Adaptor**

Fix on skull clamp to fix Leyla arm. Compatible with any skull clamp. Compatible with other brands of Leyla retractor such as Aesculap.  
HR90013Y



**C-clamp for Leyla Retractor**

HR90033Y



**HALO Leyla Retractor**

HR04253Y:250mm  
HR04303Y:300mm  
HR04353Y:350mm



**Universal Key**

HR00013Y